



Government of **Western Australia**
Department of **Health**

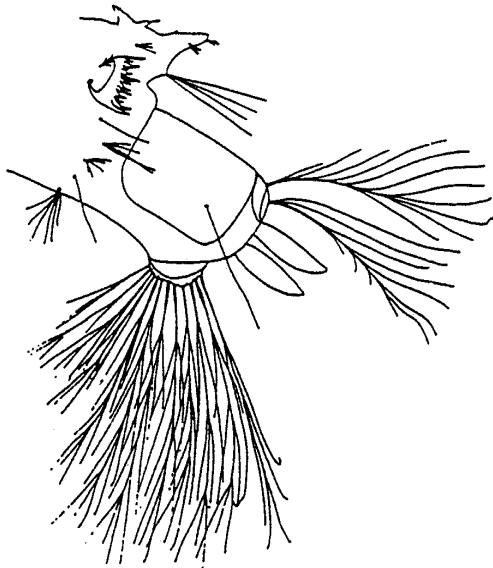
Larval Mosquito Identification Key:

SOUTH WEST REGION OF WESTERN AUSTRALIA

Simplified illustrated key for fourth instar mosquito larvae in the South West of Western Australia

1

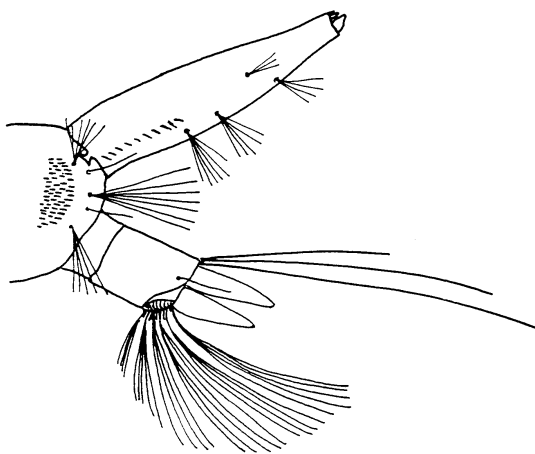
1A Siphon absent *Anopheles*



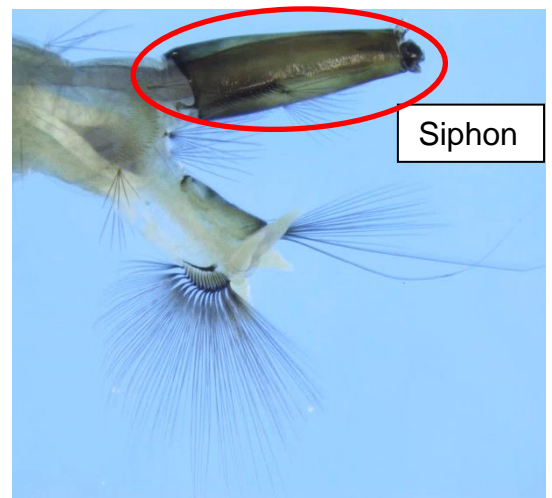
Russell RC (1993) Mosquitoes and mosquito borne disease in southeastern Australia



1B Siphon present 2



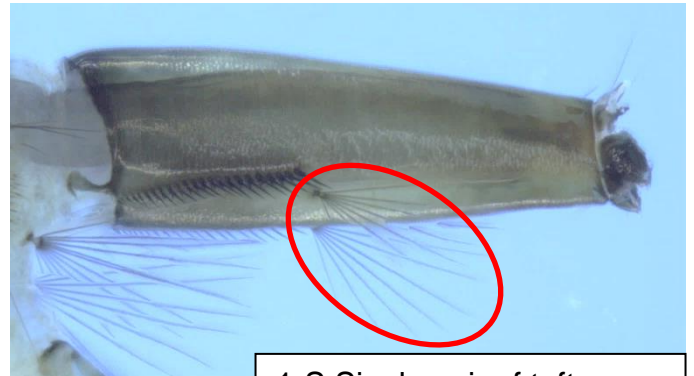
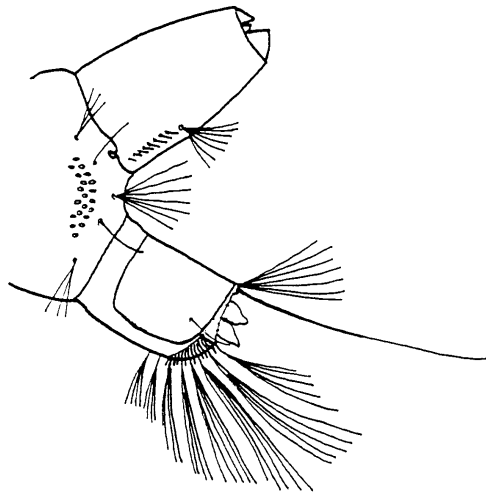
Marks EN (1982) An atlas of Common Queensland Mosquitoes



Simplified illustrated key for fourth instar mosquito larvae in the South West of Western Australia

2

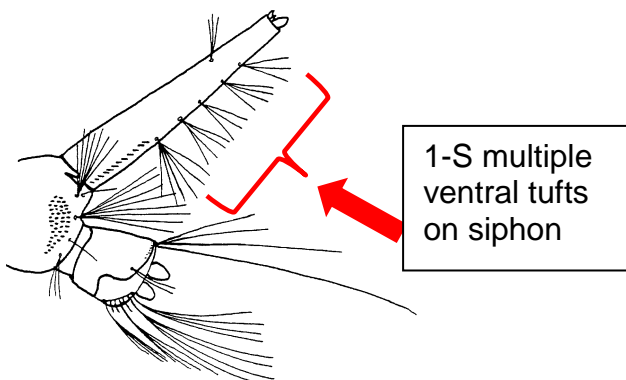
2A One pair of ventral hair tufts (setae 1-S) on siphon 3 (*Aedes*)



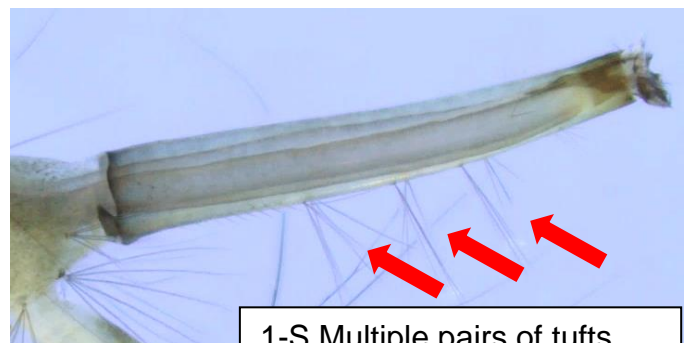
1-S Single pair of tufts, one on each side of siphon

Marks EN (1982) An atlas of Common Queensland Mosquitoes

2B More than one pair of ventral hair tufts (setae 1-S) on siphon 8 (*Culex*)



1-S multiple ventral tufts on siphon



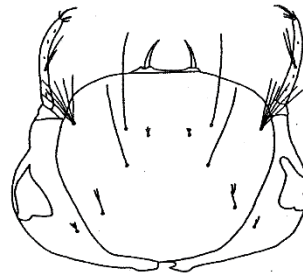
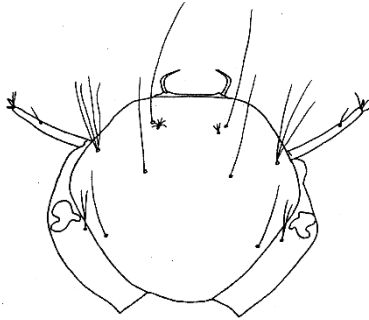
1-S Multiple pairs of tufts, one on each side of siphon

Adapted from Marks EN (1982) An atlas of Common Queensland

Simplified illustrated key for fourth instar mosquito larvae in the South West of Western Australia

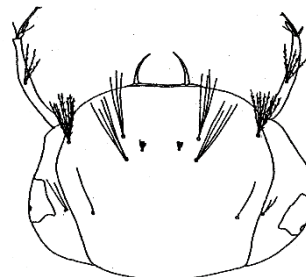
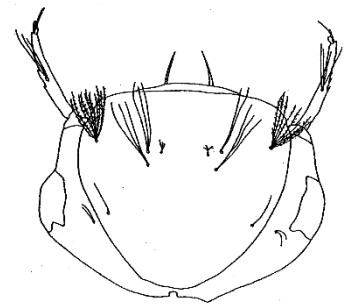
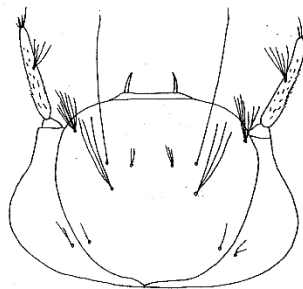
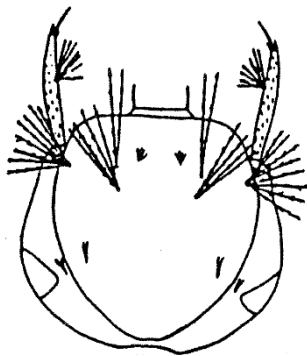
3

3A Head hair 5 (5-C) single 4



Russell RC (1993) Mosquitoes and mosquito borne disease in southeastern Australia

3B Head hair 5-C not single 5



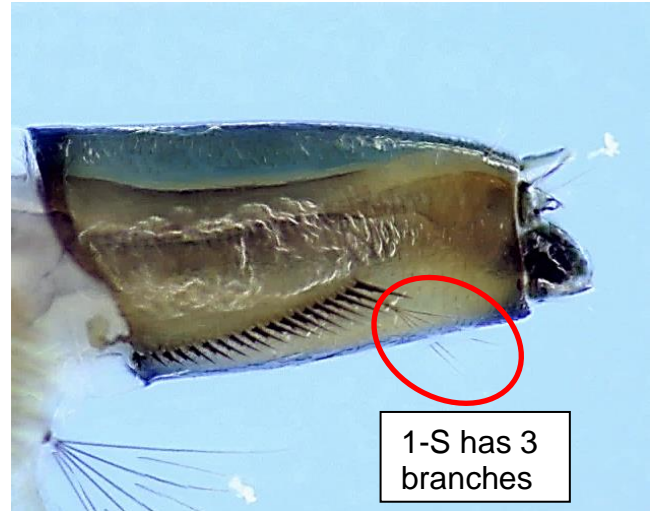
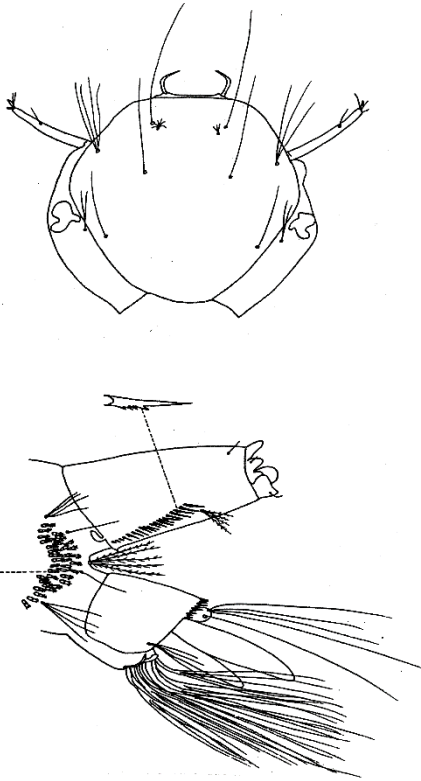
Liehne PFS (1991) An atlas of the mosquitoes of Western Australia

Russell RC (1993) Mosquitoes and mosquito borne disease in southeastern Australia

Simplified illustrated key for fourth instar mosquito larvae in the South West of Western Australia

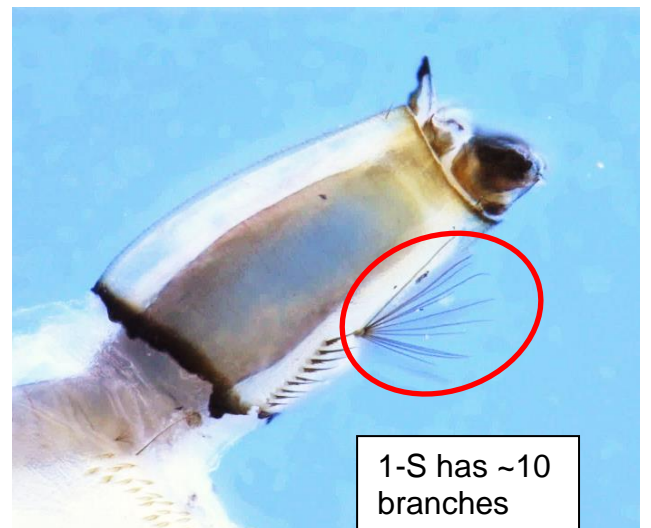
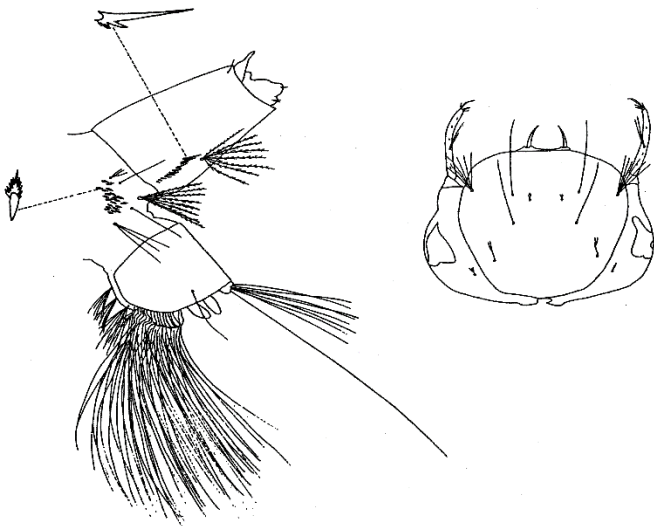
4

4A Seta 1-S with three branches *Aedes notoscriptus*



Russell RC (1993) Mosquitoes and mosquito borne disease in southeastern Australia

4B Seta 1-S with approximately 10 branches *Aedes vigilax*

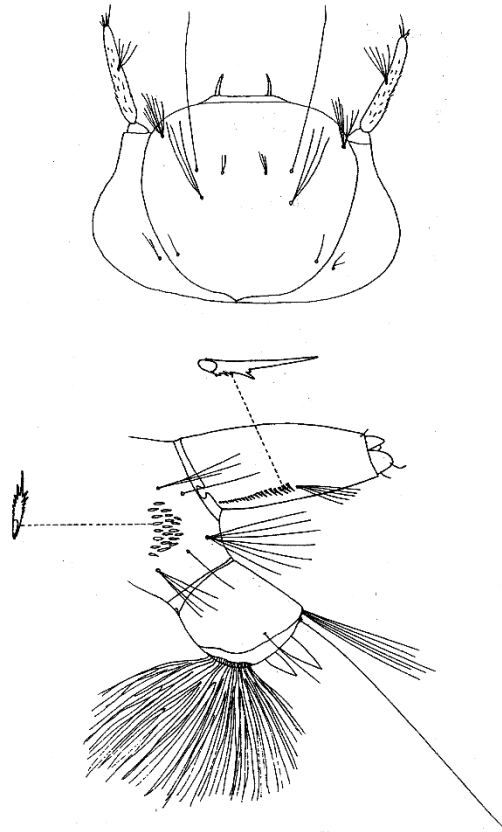


Russell RC (1993) Mosquitoes and mosquito borne disease in southeastern Australia

Simplified illustrated key for fourth instar mosquito larvae in the South West of Western Australia

5

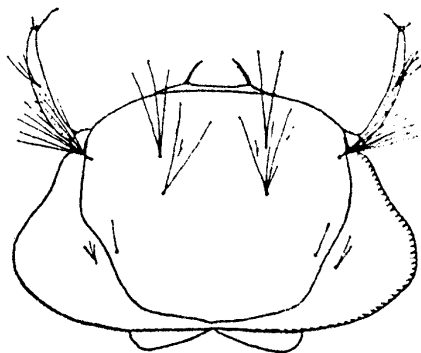
5A Head hair 6 (6-C) single and longer than 5-C with two or more branches *Aedes clelandi*



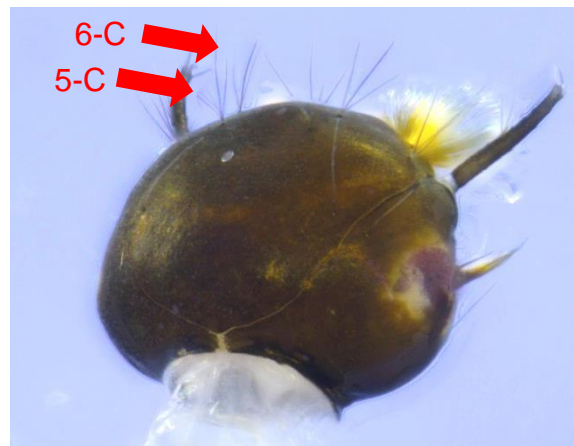
Russell RC (1993) Mosquitoes and mosquito borne disease in southeastern Australia



5B Head hair 6-C not single and is equal in length to 5-C 6



Liehne PFS (1991) An atlas of the mosquitoes of Western Australia

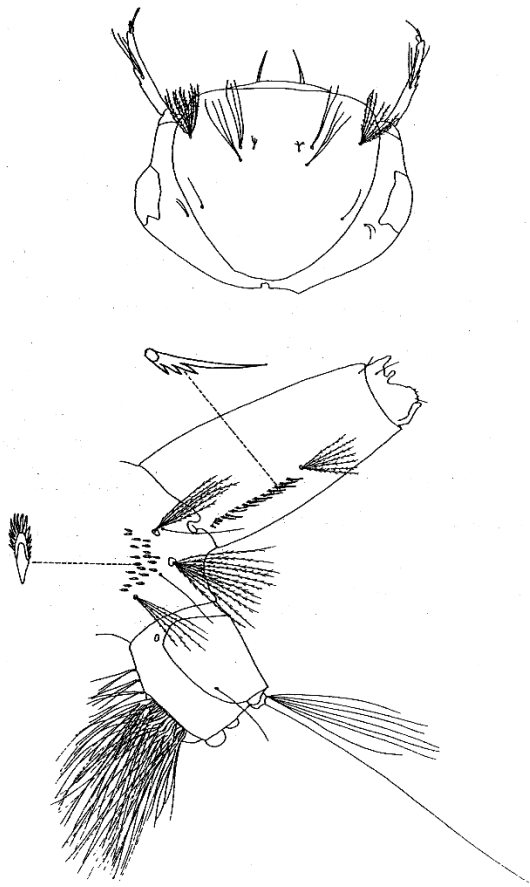


Simplified illustrated key for fourth instar mosquito larvae in the South West of Western Australia

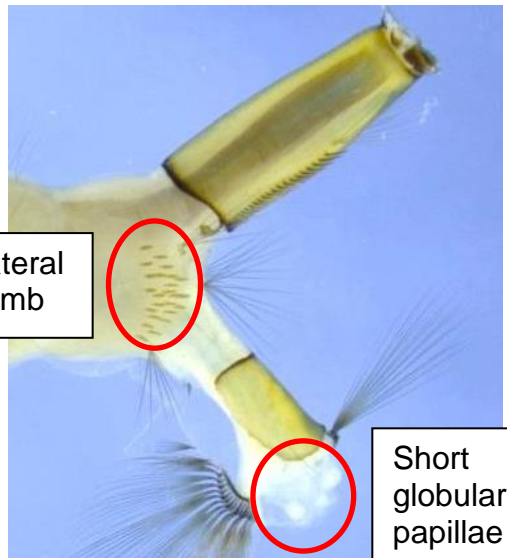
6

6A Anal papillae rounded; lateral comb of 16-35 scales denticulate

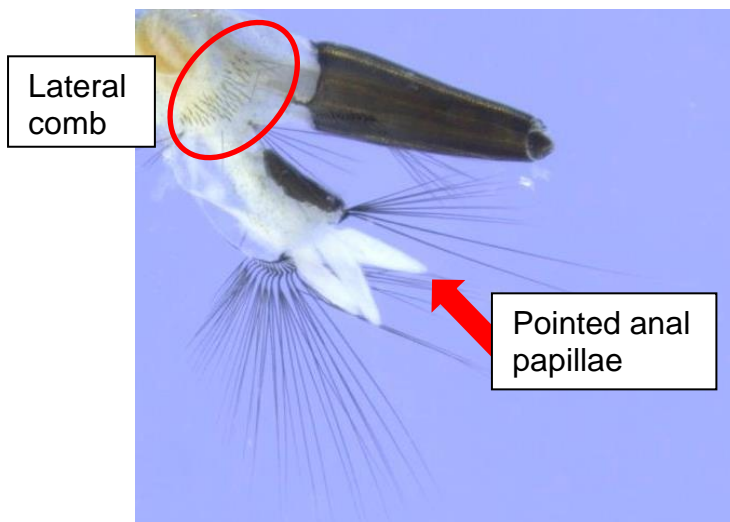
..... *Aedes camptorhynchus*



Russell RC (1993) Mosquitoes and mosquito borne disease in southeastern Australia



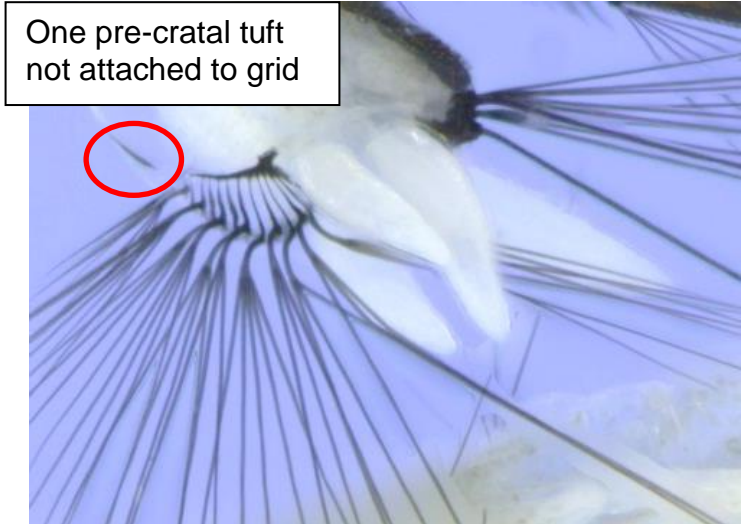
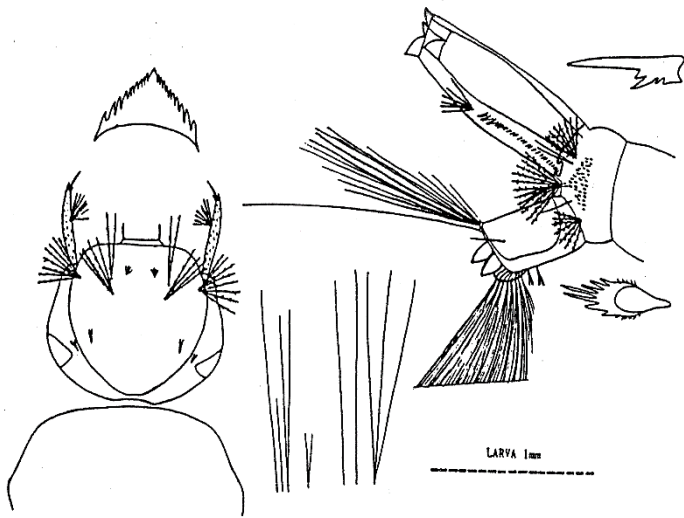
6B Anal papillae pointed; lateral comb with 35 or more scales 7



Simplified illustrated key for fourth instar mosquito larvae in the South West of Western Australia

7

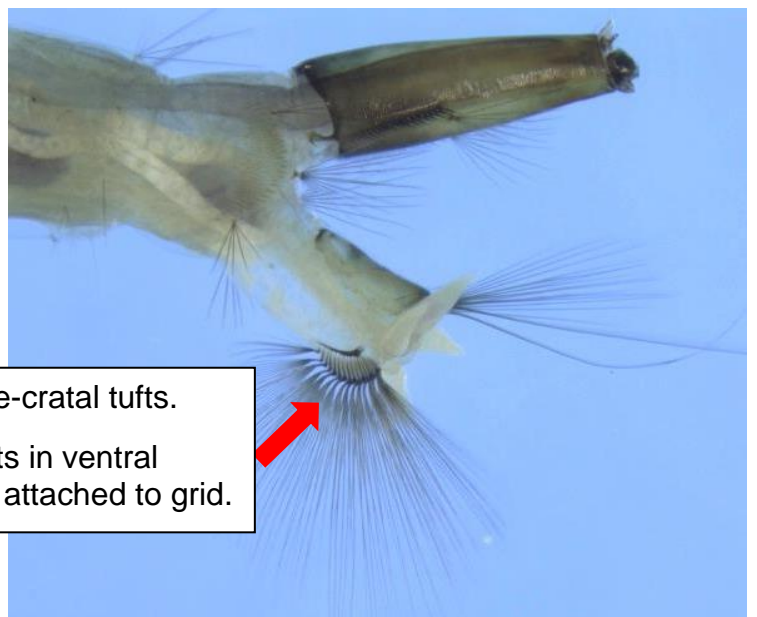
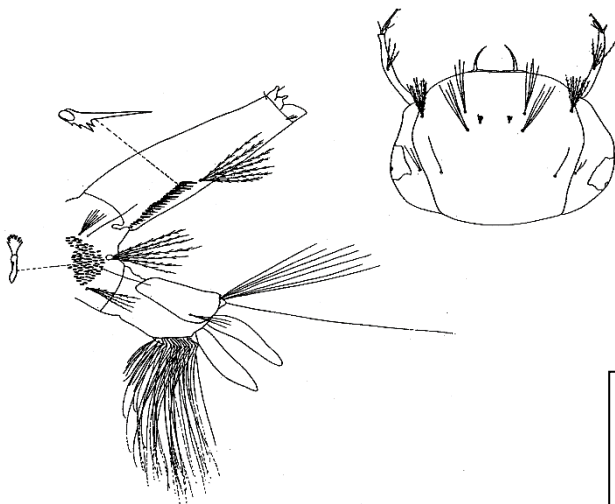
7A Head hair 6-C bifid; lateral comb of 35-60 fringed scales; anal papillae 0.2 length of saddle; one pre-cratal tuft ***Aedes ratcliffei***



One pre-cratal tuft not attached to grid

Liehne PFS (1991) An atlas of the mosquitoes of Western Australia

7B Lateral comb of ~100 fringed scales, anal papillae half the length of saddle, no pre-cratal tufts ***Aedes alboannulatus***



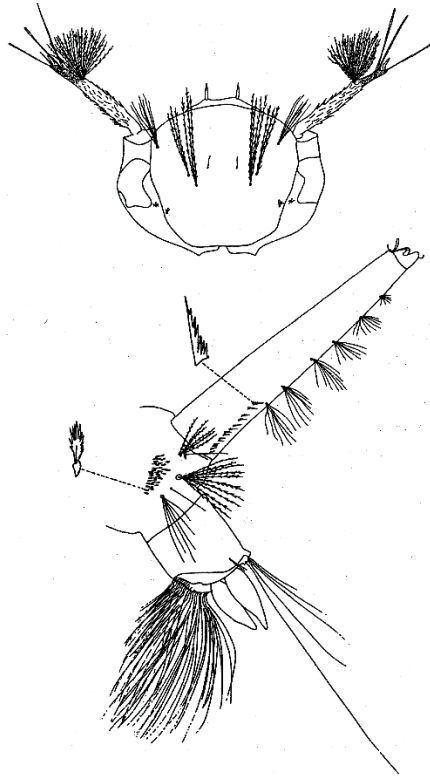
No pre-cratal tufts.
All tufts in ventral brush attached to grid.

Russell RC (1993) Mosquitoes and mosquito borne disease in southeastern Australia

Simplified illustrated key for fourth instar mosquito larvae in the South West of Western Australia

8

8A Antennae milky white basal 2/3 and very dark tip; siphon with 5-6 pairs of ventral hair tufts *Culex annulirostris*



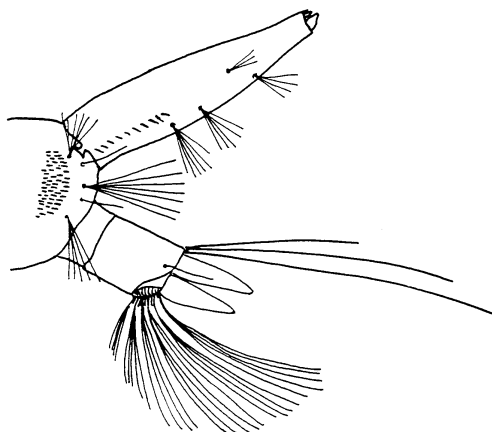
Russell RC (1993) Mosquitoes and mosquito borne disease in southeastern Australia



Antennae milky white with dark tips and base



8B Antennae uniform brown/grey; siphon with 3-4 pairs of ventral hair tufts and one group lateral 9



Marks EN (1982) An atlas of Common Queensland Mosquitoes

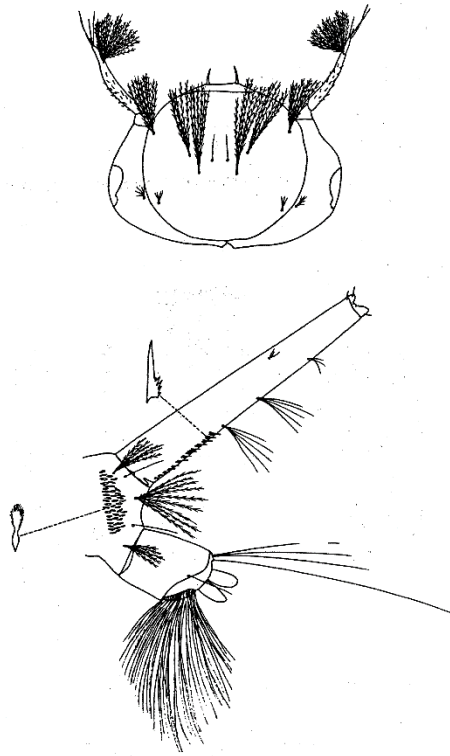


Antennae brown/grey

Simplified illustrated key for fourth instar mosquito larvae in the South West of Western Australia

9

9A Anal papillae short and rounded, less than half the length of the saddle *Culex globocoxitus*



Russell RC (1993) Mosquitoes and mosquito borne disease in southeastern Australia

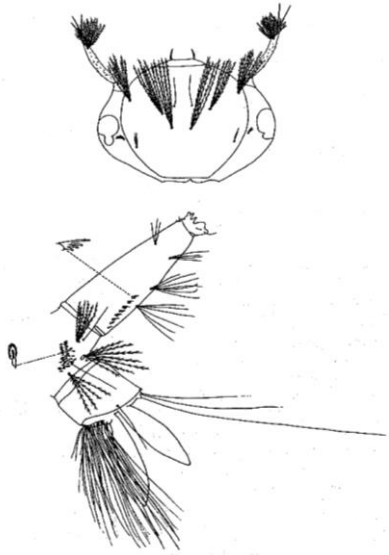
9B Anal papillae about same length as saddle 10



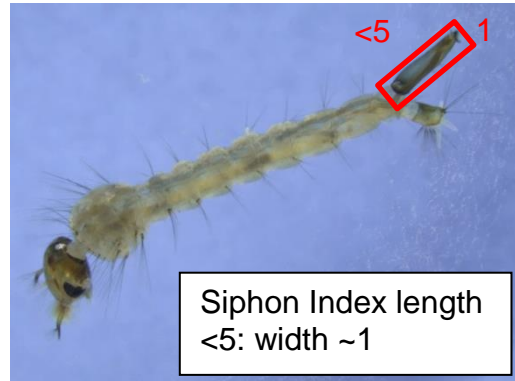
Simplified illustrated key for fourth instar mosquito larvae in the South West of Western Australia

10

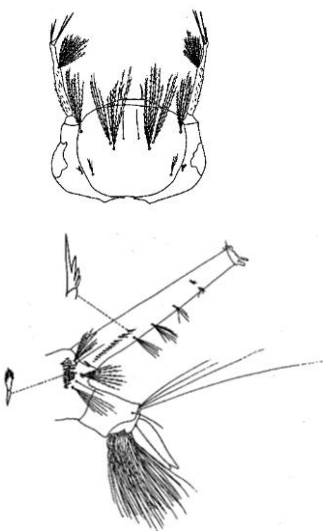
10A Siphon about 3 times length of saddle (Siphon Index less than 4.8:1, usually 3.5-4.5:1); basal 1/3 siphon swollen ("bottle shape") ... short antennae ***Culex quinquefasciatus***



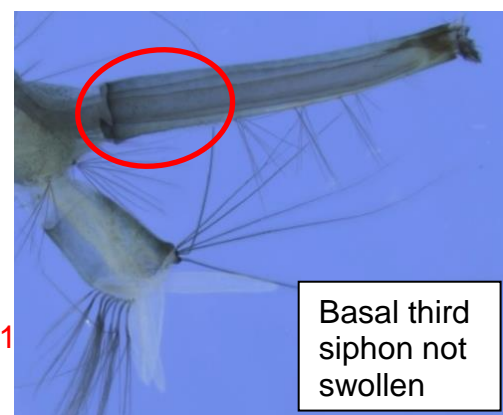
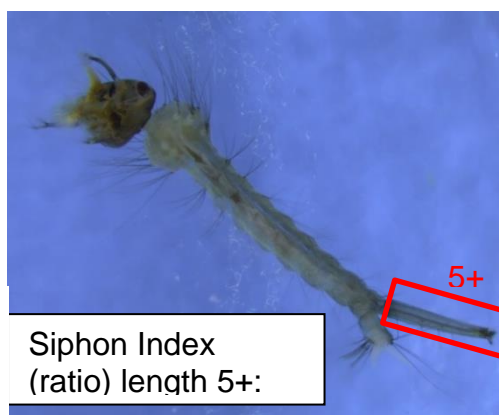
Russell RC (1993) Mosquitoes and mosquito borne disease in southeastern Australia



10B Siphon about 5 times length of saddle (Siphon Index more than 5:1); siphon not swollen long antennae ***Culex australicus***



Russell RC (1993) Mosquitoes and mosquito borne disease in southeastern Australia



© Department of Health 2021

Copyright to this material is vested in the State of Western Australia unless otherwise indicated. Apart from any fair dealing for the purposes of private study, research, criticism or review, as permitted under the provisions of the *Copyright Act 1968*, no part may be reproduced or re-used for any purposes whatsoever without written permission of the State of Western Australia.