



# COVID-19 Weekly Surveillance Report

## Table of Contents

<b>Summary for the week 09 May to 15 May 2022 (inclusive)</b> .....	<b>2</b>
<b>Hospitalisations, ICU admissions and deaths</b> .....	<b>3</b>
Figure 1. Number of COVID-19 cases admitted to hospital and intensive care unit transfers, and cumulative number of COVID-19 cases, by notification date, 01 January to 15 May 2022.....	3
Table 1. Number of COVID-19 related deaths reported by vaccination status and age group, 09 May to 15 May 2022. ....	4
<b>Case data</b> .....	<b>5</b>
Figure 2. COVID-19 cases by notification date and test type, Western Australia, 01 January to 15 May 2022. ....	5
Figure 3. COVID-19 cases by age group and sex, Western Australia, 09 May to 15 May 2022. ....	6
Figure 4. 7-day moving average of COVID-19 cases per 100,000 people, by Australian jurisdiction, 01 December 2021 to 15 May 2022. ....	7
Figure 5. 7-day moving average of COVID-19 cases per 100,000 by age group, Western Australia, 07 February to 15 May 2022. ....	8
Figure 6. 7-day moving average of COVID-19 cases per 100,000 people, by public health region, Western Australia, 07 February 2022 to 15 May 2022. ....	9
Table 2. Number of COVID-19 cases and case rates per 100,000 population, by region, 09 May to 15 May 2022 and 02 May to 08 May 2022.....	10
Figure 7 (a). Locally-acquired COVID-19 case rates per 100,000 population by LGA, regional Western Australia, 09 May to 15 May 2022. (b) Locally-acquired COVID-19 case rates per 100,000 population by LGA, Perth metropolitan area, 09 May to 15 May 2022. ....	11
<b>Aboriginal case summary</b> .....	<b>12</b>
Figure 8. COVID-19 cases in Western Australia per 100,000 population, and rate ratio, by Indigenous status and notification date, 07 February to 15 May 2022.....	12
<b>Testing data</b> .....	<b>13</b>
Figure 9. The number of COVID-19 polymerase chain reaction tests and proportion positive by laboratory category and specimen date, 01 December 2021 to 15 May 2022. ....	13
Table 3. Number of COVID-19 polymerase chain reaction tests and testing rates, by region, Western Australia, 09 May to 15 May 2022 and 02 May to 08 May 2022.....	14
Figure 10 (a). Polymerase chain reaction testing rates per 100,000 population by LGA, regional Western Australia, 09 May to 15 May 2022. (b) Polymerase chain reaction testing rates per 100,000 population by LGA, Perth metropolitan area, 09 May to 15 May 2022. ....	15
<b>Appendix 1</b> .....	<b>16</b>
Regional cases by postcode, 09 May – 15 May 2022.....	16

## Summary for the week 09 May to 15 May 2022 (inclusive)

In the week of 09 May to 15 May 2022 there were:

- 99,250 COVID-19 cases reported (52% increase compared to previous week)
  - 35,257 with positive polymerase chain reaction (PCR) tests (39% increase)
  - 63,993 with positive rapid antigen tests (RAT) (60% increase)
  - 97,666 locally-acquired, 1266 interstate acquired, 318 overseas acquired
- 232 hospital admissions (22% increase) and 10 transfers into an intensive care unit (43% increase)
- 25 deaths reported (56% increase), aged between 52 to 98 years old
- 124,086 COVID-19 PCR tests conducted (32% increase).

### Surveillance summary

There were 124,086 PCR tests conducted in the current reporting week (week ending 15 May 2022), a 32% increase compared to the previous reporting week, with test positivity proportion remaining high over the course of the week with a 7-day average of 30.2%.

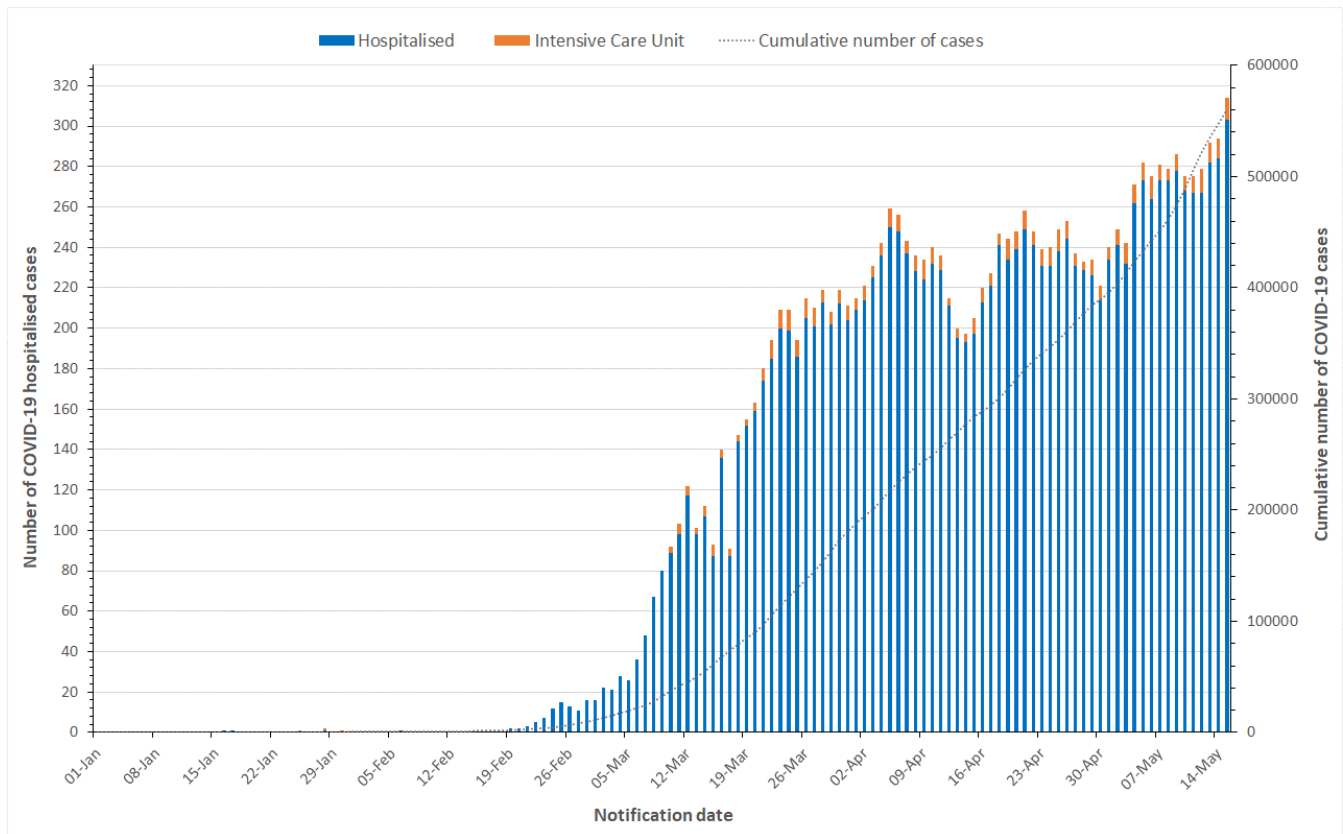
Overall, case numbers increased by 52% compared to the previous week, compared to the 31% week-on-week increase observed during the previous 7-day period. There was an increase in cases diagnosed by PCR test and RAT of 39% and 60%, respectively. The significant increase in cases over the last two weeks and high proportion of positive PCR tests indicates the case load in the community is continuing to increase.

Case rates per 100,000 population for all public health regions, with the exception of the Kimberley, are continuing to increase, with the South West region and the Perth metropolitan area having the highest rates. Rates in the Perth metropolitan area are tracking approximately 20% higher than in Western Australia Country Health Service (WACHS) areas combined. Younger age groups less than 40 years old continue to represent the highest proportion of cases reported, with school aged children between 10-19 years increasing more in the past week compared to other age groups. The rate of cases per 100,000 population in WA continues on an upward trajectory and remains higher than all other Australian jurisdictions.

There were 3,496 cases and 2 deaths in the Aboriginal population during the reporting period, a 27% increase in cases compared to the previous report week. Cases in the Aboriginal population are now being reported at a lower rate compared to the non-Aboriginal population, with the rate ratio falling to 0.87 in the past week.

# Hospitalisations, ICU admissions and deaths

Figure 1. Number of COVID-19 cases admitted to hospital and intensive care unit transfers, and cumulative number of COVID-19 cases, by notification date, 01 January to 15 May 2022.



**Notes**  
Data sourced from Western Australia Department of Health dataset  
Notification date refers to data collected up to the end of the 24-hour reporting period 8pm to 8pm  
'Hospitalised' relates to active and cleared COVID-19 cases that are current hospital inpatients. The reason for admission may be unrelated to COVID-19 for some people  
'Intensive care unit' (ICU) is a subset of hospitalised and relates to active/cleared COVID-19 cases that are currently in an ICU.

**Table 1. Number of COVID-19 related deaths reported by vaccination status and age group, 09 May to 15 May 2022.**

	<b>Week 09 May to 15 May 2022</b>	<b>01 Jan 2022 – 15 May 2022</b>
<b>Number of COVID-19 vaccine doses</b>	<b>Deaths n=25</b>	<b>Deaths n=178</b>
<b>0</b>	8 (32.0%)	46 (25.8%)
<b>1</b>	3 (12.0%)	17 (9.6%)
<b>2</b>	4 (16.0%)	34 (19.1%)
<b>3+</b>	10 (40.0%)	81 (45.5%)
<b>Age group (years)</b>		
<b>0-9</b>	0 (0%)	0 (0%)
<b>10-19</b>	0 (0%)	2 (1.1%)
<b>20-29</b>	0 (0%)	1 (0.6%)
<b>30-39</b>	0 (0%)	3 (1.7%)
<b>40-49</b>	0 (0%)	4 (2.3%)
<b>50-59</b>	3 (12.0%)	15 (8.4%)
<b>60-69</b>	3 (12.0%)	18 (10.1%)
<b>70-79</b>	3 (12.0%)	28 (15.7%)
<b>80-89</b>	8 (32.0%)	66 (37.1%)
<b>90+</b>	8 (32.0%)	41 (23.0%)

**Notes**

Data sourced from Western Australia Department of Health dataset

Number of vaccination doses sourced from Australian Immunisation Register. Vaccination data are available for WA residents only, therefore, the number of unvaccinated individuals (0 doses) may be overestimated

Hospitalisation and intensive care unit breakdown available in bi-weekly WA COVID-19 data update. Link [here](#).

Deaths are counted by notification date and may include historical deaths that occurred (i.e. date of death) prior to the current report week

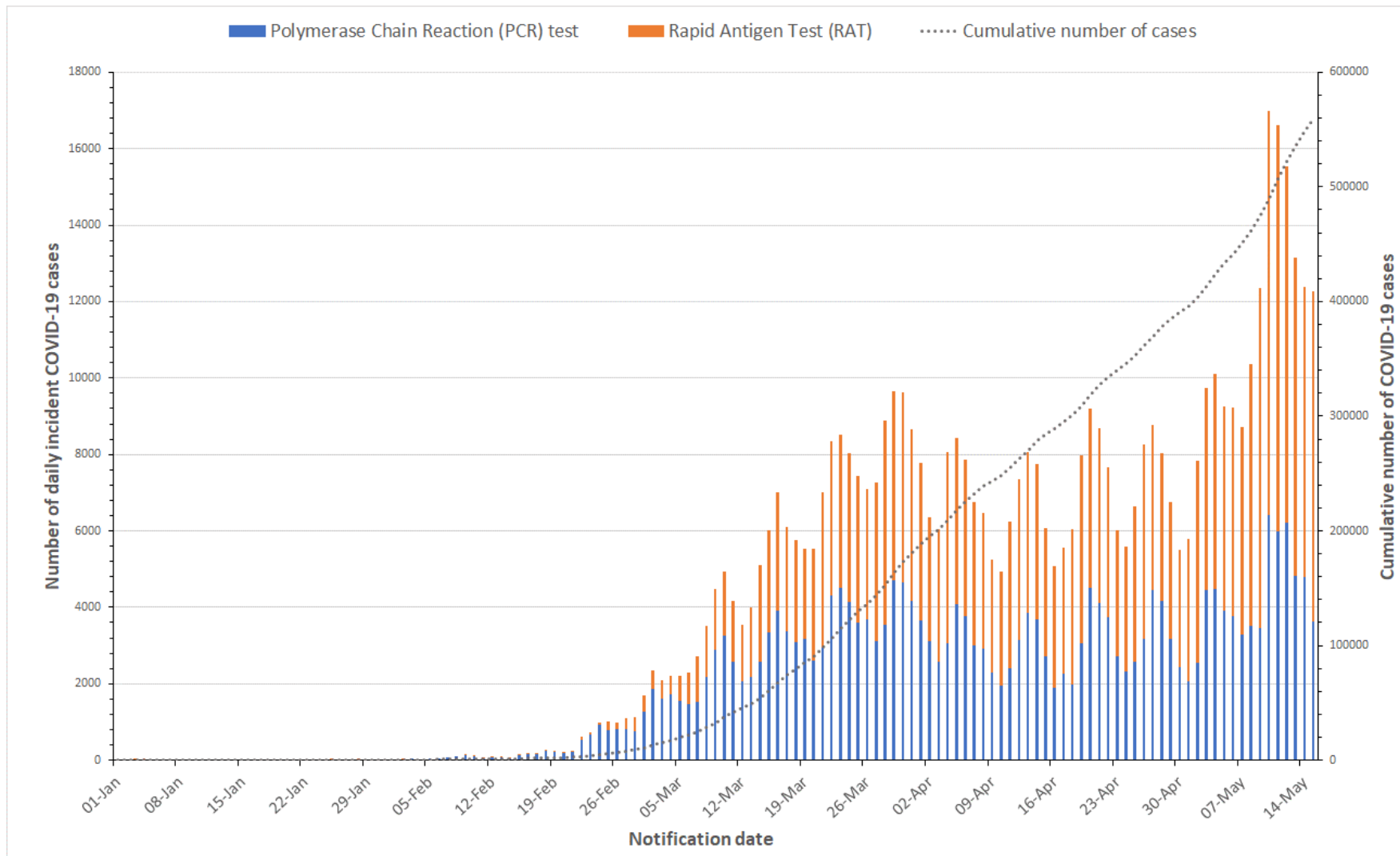
Notification date refers to data collected up to the end of the 24-hour reporting period 8pm to 8pm

Deaths are not necessarily associated with hospital and/or ICU admissions

Two previous deaths were reclassified as not being COVID-related in the most recent report week.

## Case data

Figure 2. COVID-19 cases by notification date and test type, Western Australia, 01 January to 15 May 2022.



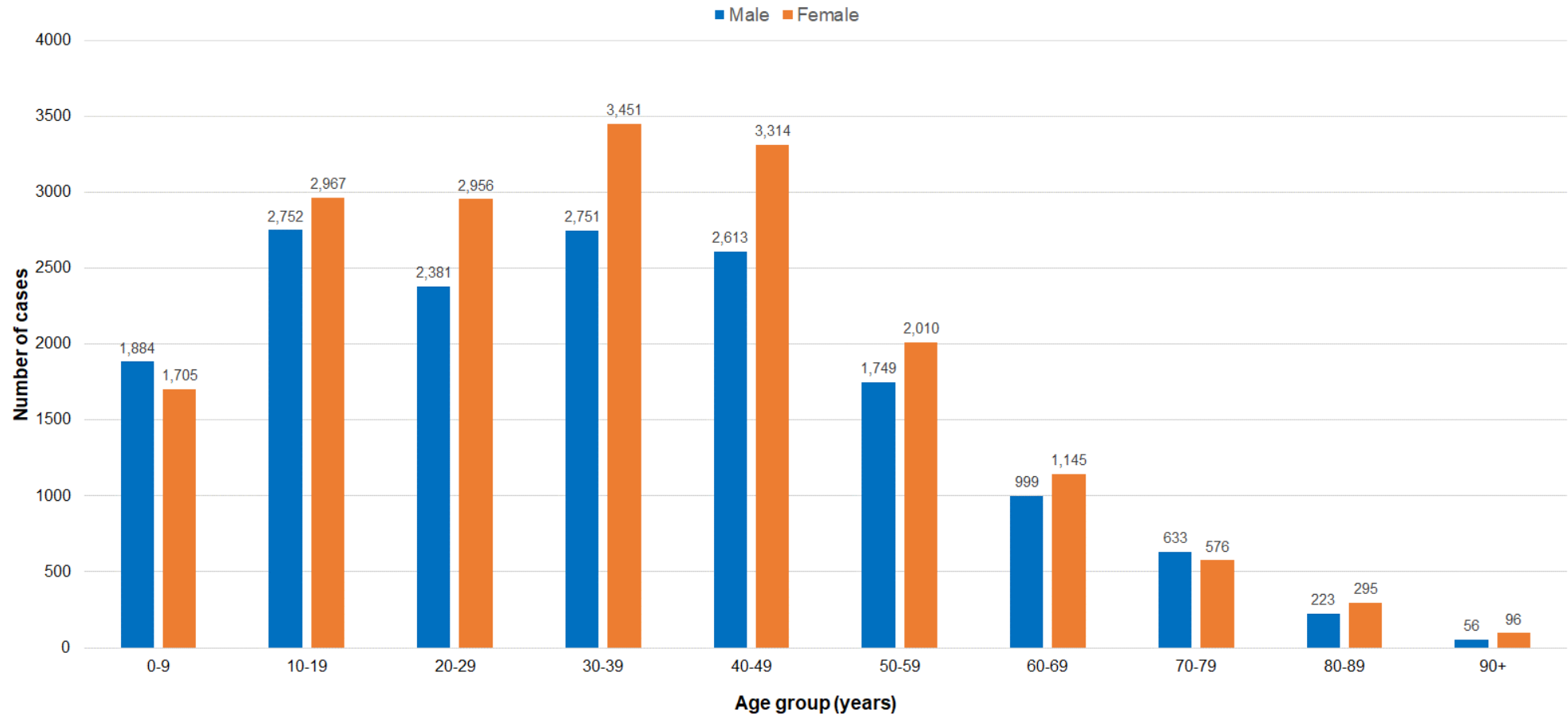
### Notes

Data sourced from Western Australia Department of Health dataset

Notification date refers to data collected up to the end of the 24-hour reporting period 8pm to 8pm.

COVID-19 Weekly Surveillance Report

**Figure 3. COVID-19 cases by age group and sex, Western Australia, 09 May to 15 May 2022.**



**Notes**

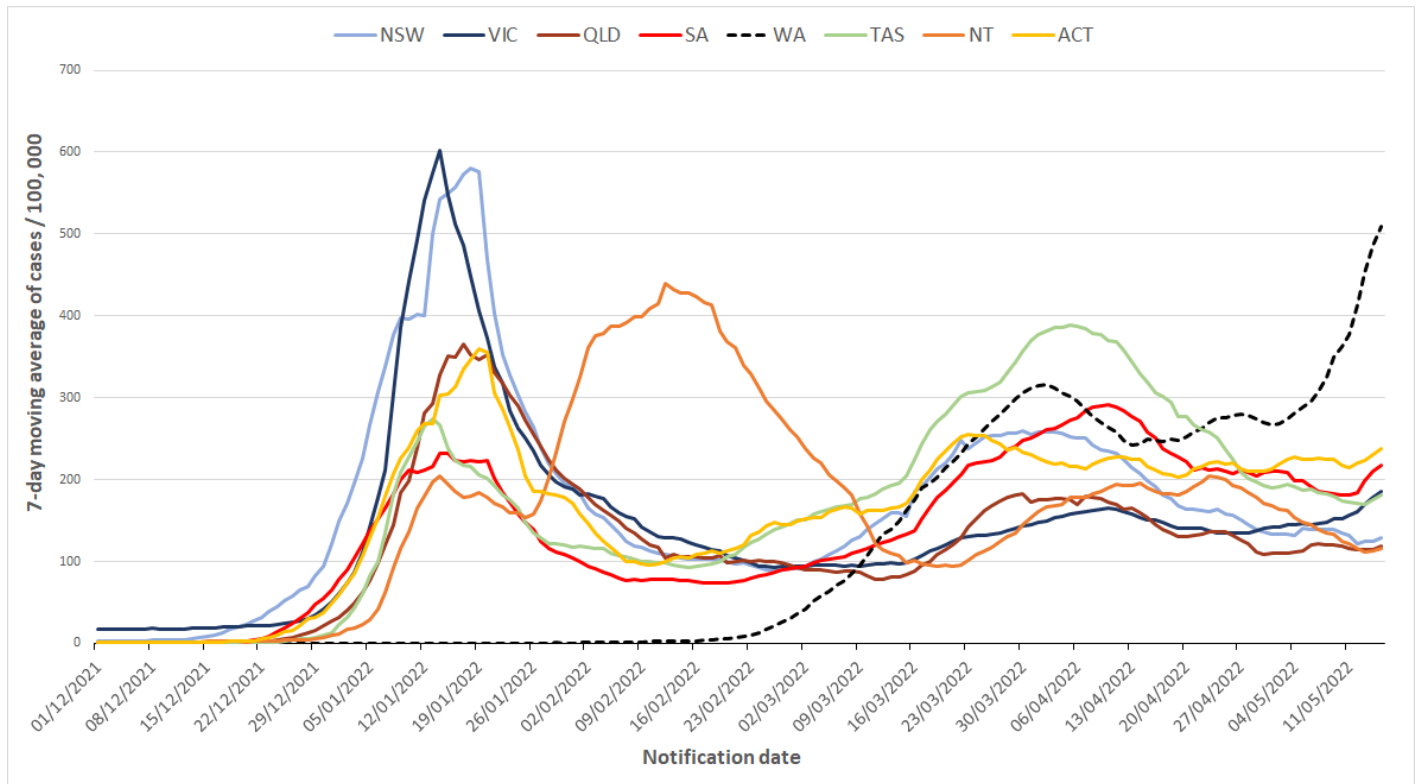
Data sourced from Western Australia Department of Health dataset

Notification date refers to data collected up to the end of the 24-hour reporting period 8pm to 8pm

Gender data is partially incomplete due to the unavailability of this variable during rapid antigen test registration, resulting in a discrepancy to total case numbers reported for the week.

- Males: n=16,041 (46.4%). Females: n=18,515 (53.6%)
- Median age = 29 years; range: 0 to 106 years

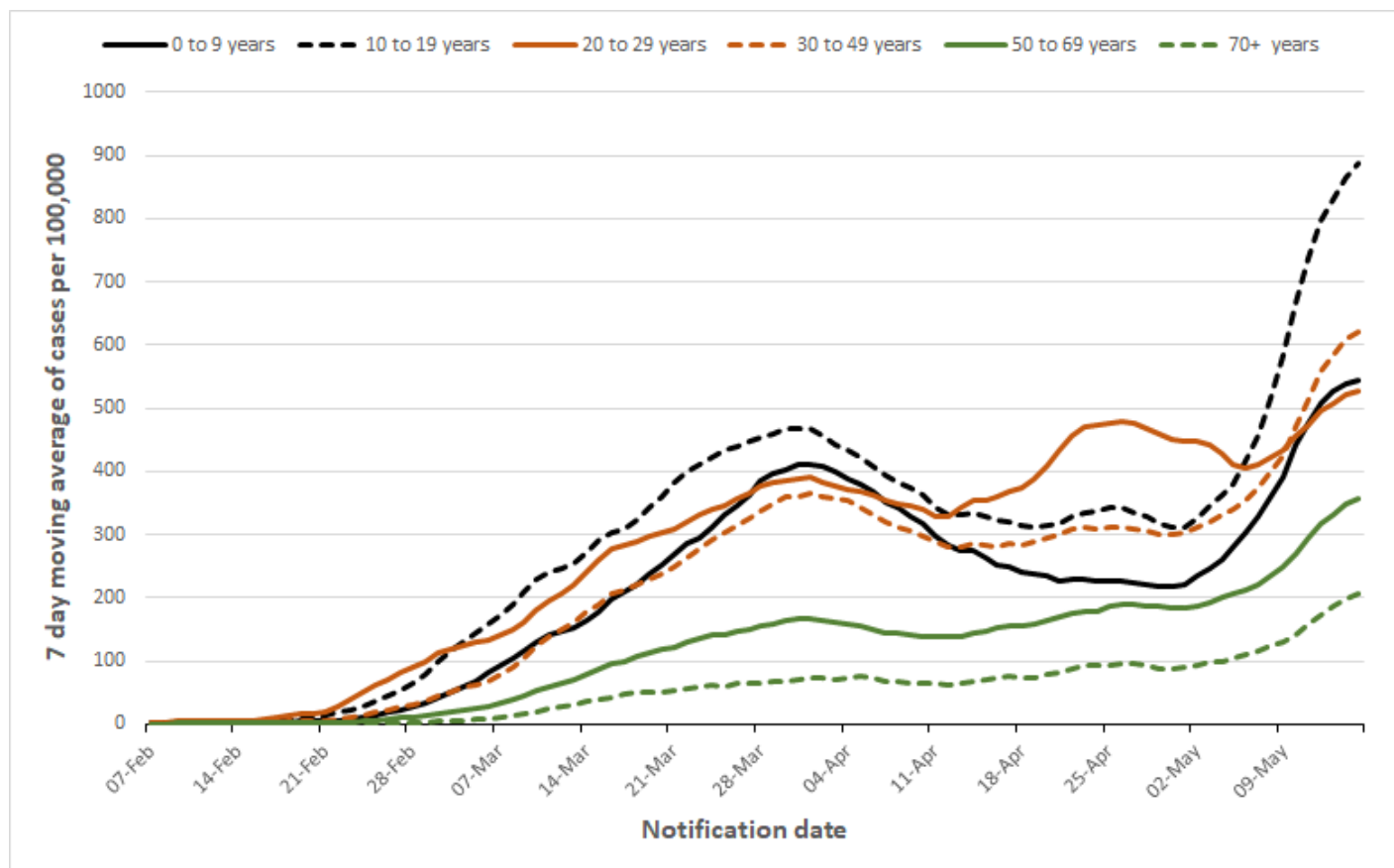
**Figure 4. 7-day moving average of COVID-19 cases per 100,000 people, by Australian jurisdiction, 01 December 2021 to 15 May 2022.**



**Notes**

Data sourced from the respective jurisdictional health department datasets  
 Notification date refers to data collected up to the end of the 24-hour reporting period 8pm to 8pm  
 Population denominator is sourced from Australian Bureau of Statistics June 2021 estimates.

**Figure 5. 7-day moving average of COVID-19 cases per 100,000 by age group, Western Australia, 07 February to 15 May 2022.**

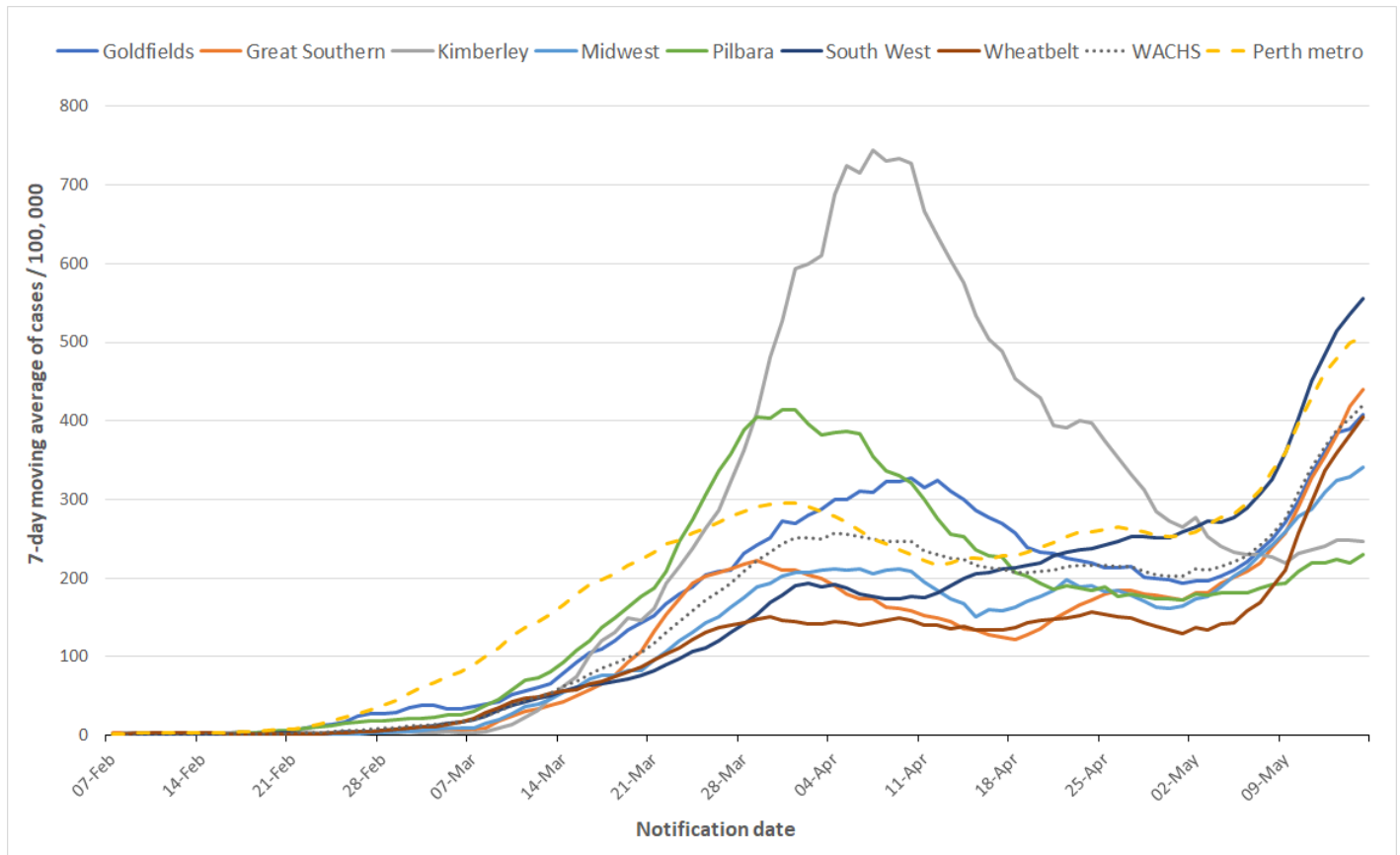


**Notes**

Data sourced from Western Australia Department of Health dataset  
 Notification date refers to data collected up to the end of the 24-hour reporting period 8pm to 8pm  
 Cases include all cases whose source of infection is classified as 'locally-acquired', 'interstate-acquired', 'overseas-acquired' and 'source under investigation'  
 Case data includes those determined by both polymerase chain reaction (PCR) tests and rapid antigen tests (RAT)  
 Population denominator sourced from Australian Bureau of Statistics June 2019 estimates.



**Figure 6. 7-day moving average of COVID-19 cases per 100,000 people, by public health region, Western Australia, 07 February 2022 to 15 May 2022.**



**Notes**  
 Data sourced from Western Australia Department of Health dataset  
 Notification date refers to data collected up to the end of the 24-hour reporting period 8pm to 8pm  
 Cases include all cases whose source of infection is classified as 'locally-acquired', 'interstate-acquired', 'overseas-acquired' and 'source under investigation'  
 Case data is by place of usual residence for positive case (due to unavailability of data for specific location of acquisition)  
 Case data includes those determined by both polymerase chain reaction (PCR) tests and rapid antigen tests (RAT)  
 Western Australia Country Health Service (WACHS) includes Goldfields, Great Southern, Kimberley, Midwest, Pilbara, South West and Wheatbelt public health regions combined  
 Perth metro includes East Metropolitan Health Service, North Metropolitan Health Service and South Metropolitan Health Service combined  
 Population denominator sourced from Australian Bureau of Statistics June 2019 estimates.

**Table 2. Number of COVID-19 cases and case rates per 100,000 population, by region, 09 May to 15 May 2022 and 02 May to 08 May 2022.**

	Region	Week 09 May to 15 May 2022		Week 02 May to 08 May 2022	
		Number for current week	Rates for current week (cases/100,000 pop)	Number for previous week	Rates for previous week (cases/100,000 pop)
<b>WACHS Regions</b>	<b>Goldfields</b>	1746	2855	1073	1754
	<b>Great Southern</b>	1967	3085	1071	1680
	<b>Kimberley</b>	702	1728	647	1593
	<b>Midwest</b>	1704	2392	1212	1701
	<b>Pilbara</b>	1136	1615	932	1325
	<b>South West</b>	7612	3885	4467	2280
	<b>Wheatbelt</b>	2252	2831	1055	1326
<b>WACHS total*</b>		<b>17,119</b>	<b>2938</b>	<b>10,457</b>	<b>1795</b>
<b>Other**</b>		798	-	689	-
<b>Metropolitan</b>		81,333	3547	54,153	2362
<b>Total</b>		99,250	3452	65,299	2271

**Notes**

Data sourced from Western Australia Department of Health dataset

Notification date refers to data collected up to the end of the 24-hour reporting period 8pm to 8pm

Cases include all cases whose source of infection is classified as 'locally-acquired', 'interstate-acquired', 'overseas-acquired' and 'source under investigation'

Case data is by place of usual residence for positive case (due to unavailability of data for specific location of acquisition)

Case data includes those determined by both polymerase chain reaction (PCR) tests and rapid antigen tests (RAT)

\*Western Australia Country Health Service (WACHS) includes Goldfields, Great Southern, Kimberley, Midwest, Pilbara, South West and Wheatbelt public health regions combined

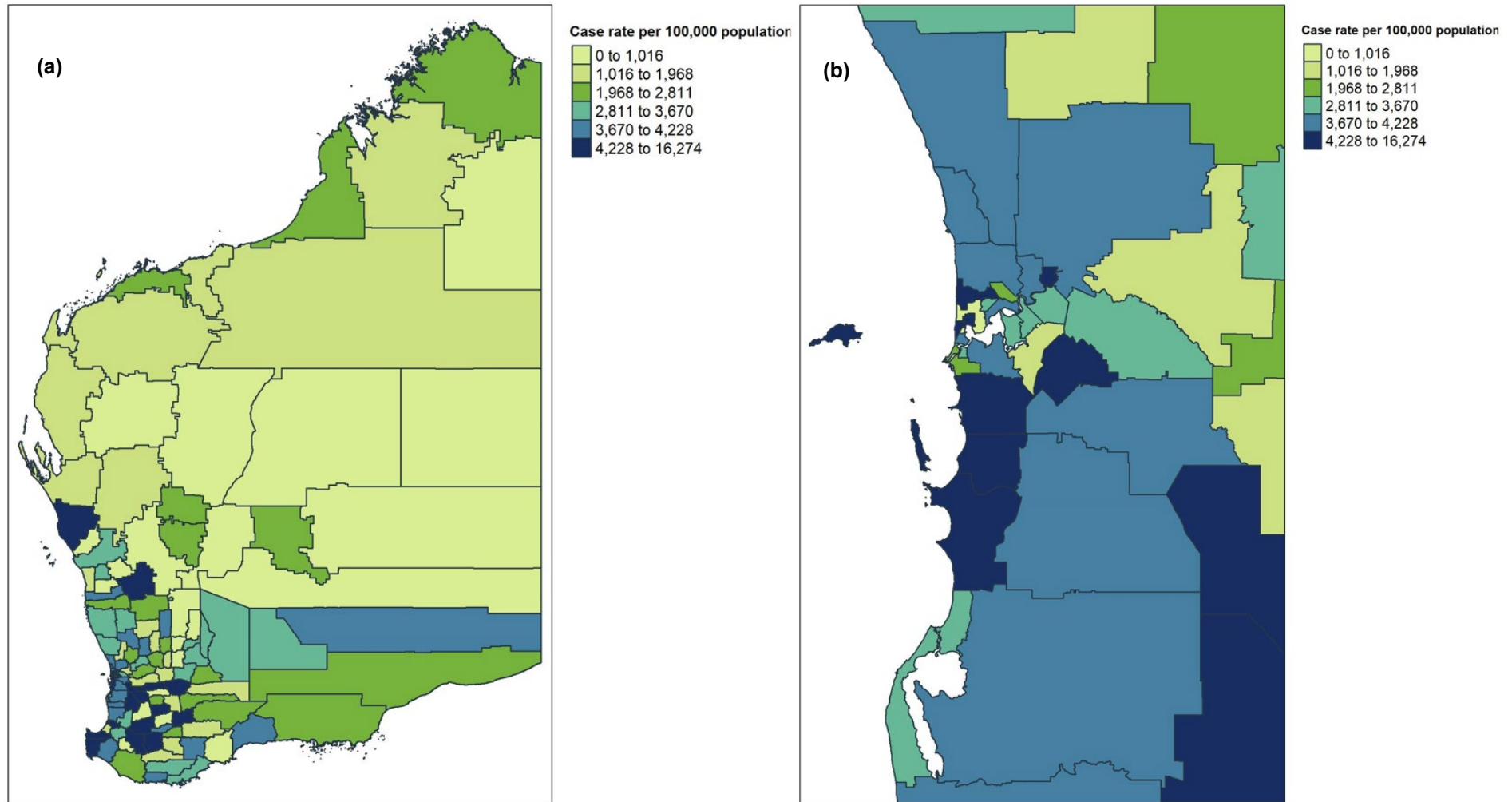
Total excludes WACHS\*

Metropolitan includes East Metropolitan Health Service, North Metropolitan Health Service and South Metropolitan Health Service combined

\*\*Other includes overseas and interstate residential addresses, and cases whom had no residential data available

Population denominator is sourced from Australian Bureau of Statistics 2019 estimates.

**Figure 7 (a). Locally-acquired COVID-19 case rates per 100,000 population by LGA, regional Western Australia, 09 May to 15 May 2022. (b) Locally-acquired COVID-19 case rates per 100,000 population by LGA, Perth metropolitan area, 09 May to 15 May 2022.**



**Notes**

Data sourced from Western Australia Department of Health dataset

Notification date refers to data collected up to the end of the 24-hour reporting period 8pm to 8pm

'Locally-acquired' cases include all cases whose source of infection is classified as 'locally-acquired' and 'source under investigation' only (excludes interstate and overseas-acquired cases)

Case data is represented on the map by place of usual residence for positive case (due to unavailability of data for specific location of acquisition)

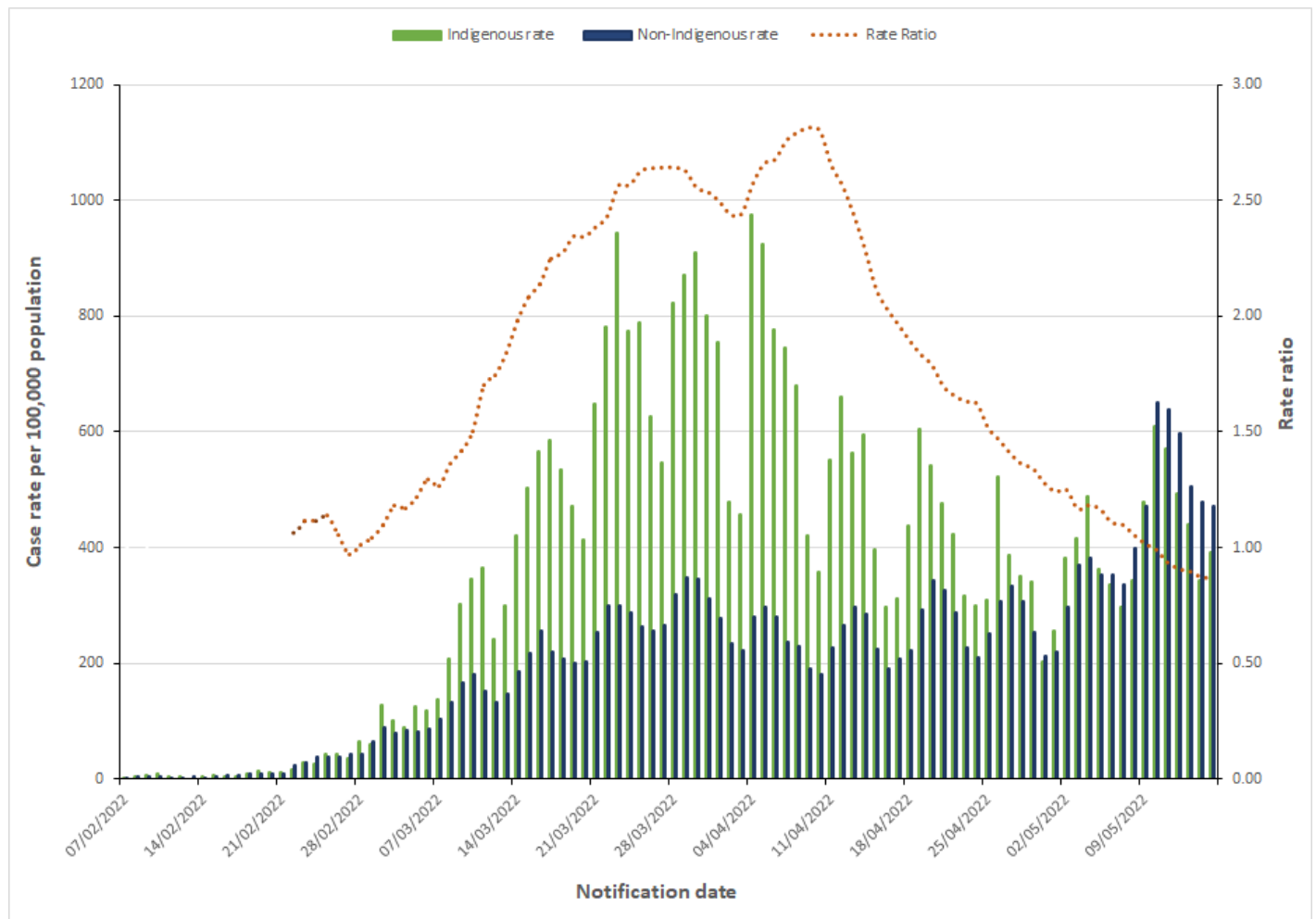
Case data includes those determined by both polymerase chain reaction (PCR) tests and rapid antigen tests (RAT)

Areas on the map are defined by Local Government Area (LGA) boundaries

Population denominator is sourced from Australian Bureau of Statistics 2019 estimates.

## Aboriginal case summary

Figure 8. COVID-19 cases in Western Australia per 100,000 population, and rate ratio, by Indigenous status and notification date, 07 February to 15 May 2022.



### Notes

Data sourced from Western Australia Department of Health dataset

Notification date refers to data collected up to the end of the 24-hour reporting period 8pm to 8pm

Indigenous status is defined as those who identify as 'Aboriginal and Torres Strait Islander origin'/'Aboriginal but not TSI origin'/'TSI but not Aboriginal origin'

Cases where Indigenous status was not stated were designated as non-Indigenous

Cases include those determined by both polymerase chain reaction (PCR) tests and rapid antigen tests (RAT)

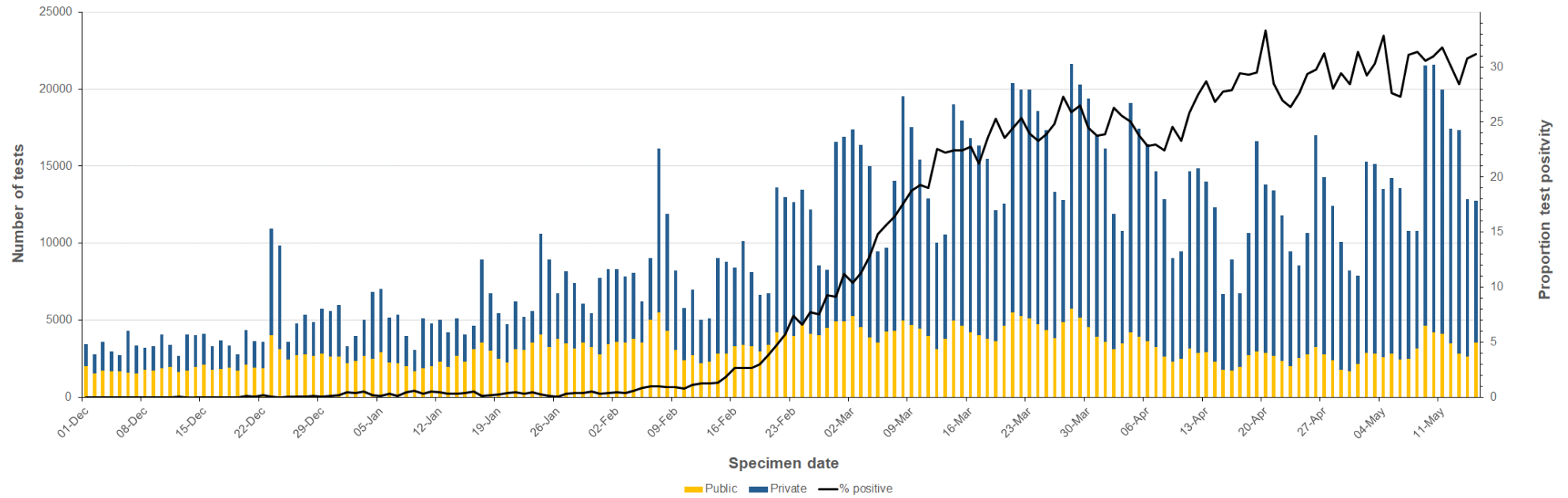
Population denominator is sourced from Australian Bureau of Statistics 2019 estimates

Rate ratio is calculated as Indigenous rate/Non-Indigenous rate, with a 7-day average of the respective rate ratios applied to smooth the trend

Rate ratio is only plotted from 22nd February 2022 onwards due to there being too few case numbers prior to this date.

# Testing data

Figure 9. The number of COVID-19 polymerase chain reaction tests and proportion positive by laboratory category and specimen date, 01 December 2021 to 15 May 2022.



### Notes

Data sourced from Western Australian public and private pathology laboratories

Specimen date refers to the date that specimen was collected

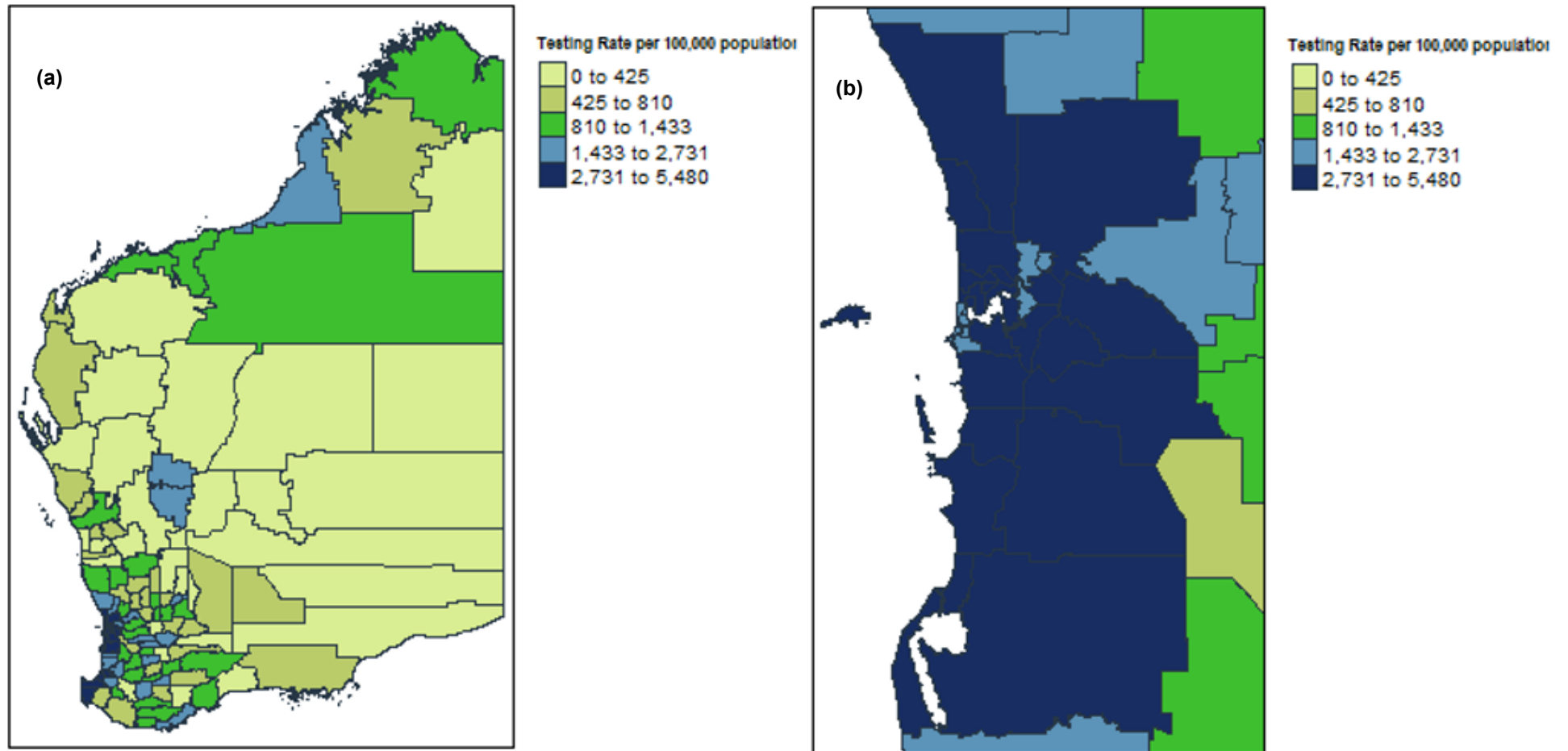
Number of tests includes both positive and negative tests.

**Table 3. Number of COVID-19 polymerase chain reaction tests and testing rates, by region, Western Australia, 09 May to 15 May 2022 and 02 May to 08 May 2022.**

	Region	Week 09 May to 15 May 2022		Week 02 May to 08 May 2022	
		Number for current week	Rates for current week (tests/100,000 pop)	Number for previous week	Rates for previous week (tests/100,000 pop)
<b>WACHS Regions</b>	<b>Goldfields</b>	598	978	461	754
	<b>Great Southern</b>	1220	1914	791	1241
	<b>Kimberley</b>	500	1231	440	1083
	<b>Midwest</b>	885	1242	836	1174
	<b>Pilbara</b>	760	1080	530	753
	<b>South West</b>	7120	3634	5458	2786
	<b>Wheatbelt</b>	1256	1579	688	865
<b>WACHS total *</b>		12,339	2118	9204	1580
<b>Other**</b>		859	-	983	-
<b>Metropolitan</b>		110,888	4836	83,467	3640
<b>Total</b>		124,086	4315	93,654	3257

**Notes**  
 Data sourced from Western Australian public and private pathology laboratories  
 Number of tests includes both positive and negative tests  
 Region of residential address for person tested  
 \*Western Australia Country Health Service (WACHS) includes Goldfields, Great Southern, Kimberley, Midwest, Pilbara, South West and Wheatbelt public health regions  
 Total excludes WACHS\*  
 \*\*Other includes overseas and interstate residential addresses  
 Population denominator is sourced from Australian Bureau of Statistics 2019 estimates.

Figure 10 (a). Polymerase chain reaction testing rates per 100,000 population by LGA, regional Western Australia, 09 May to 15 May 2022. (b) Polymerase chain reaction testing rates per 100,000 population by LGA, Perth metropolitan area, 09 May to 15 May 2022.



**Notes**

Data sourced from Western Australian pathology laboratories and includes both positive and negative tests  
 RAT testing numbers could not be included due to the department only receiving positive RAT tests  
 Population denominator is sourced from Australian Bureau of Statistics 2019 estimates  
 Testing data is represented on the map by place of usual residence for person tested (due to unavailability of data for place of test)  
 Areas on the map are defined by Local Government Area (LGA) boundaries.

# Appendix 1

## Regional cases by postcode, 09 May – 15 May 2022

WACHS Regions	Postcode	Week 09 May to 15 May 2022	WACHS Regions	Postcode	Week 09 May to 15 May 2022	WACHS Regions	Postcode	Week 09 May to 15 May 2022	
Goldfields	872	<5	Great South South (continued)	6343	<5	Pilbara	6710	11	
	6346	9		6348	9		6712	<5	
	6429	14		6394	6		6713	46	
	6430	960		6395	122		6714	461	
	6431	<5		6396	<5		6716	7	
	6432	242		6397	<5		6718	18	
	6434	<5		Kimberley	6725		340	6720	23
	6436	<5	6726		68		6721	79	
	6437	9	6728		73		6722	150	
	6438	25	6740		40		6751	108	
	6440	<5	6743		125		6753	159	
	6442	93	6765		42		6754	53	
	6443	20	6770		14		6758	<5	
	6446	<5	Midwest	6514	<5		6760	<5	
	6447	<5		6515	12		6762	15	
	6448	10		6517	19	South West	6218	14	
	6450	348		6518	<5		6219	6	
	6646	<5		6519	5		6220	169	
	Great Southern	6316		13	6522		13	6221	11
		6317		88	6525		47	6223	7
6318		10	6528	17	6224		40		
6320		8	6530	1136	6225		253		
6321		10	6532	199	6226		31		
6322		5	6535	36	6227		36		
6323		38	6536	33	6228		7		
6324		113	6537	16	6230	1943			
6326		11	6620	<5	6232	550			
6327		8	6623	31	6233	896			
6328		<5	6630	7	6236	97			
6330		1179	6632	<5	6237	137			
6333		244	6635	<5	6239	169			
6335		19	6638	9	6240	<5			
6336		<5	6640	<5	6243	<5			
6337	40	6642	<5	6244	51				
6338	27	6701	59	6251	14				
6341	6	6707	44	6252	<5				



WACHS Regions	Postcode	Week 09 May to 15 May 2022	WACHS Regions	Postcode	Week 09 May to 15 May 2022	WACHS Regions	Postcode	Week 09 May to 15 May 2022	
South West (continued)	6253	10	Wheatbelt (continued)	6361	<5	Wheatbelt (continued)	6475	14	
	6254	19		6363	<5		6477	<5	
	6255	112		6365	7		6479	5	
	6256	10		6367	9		6480	<5	
	6258	216		6369	16		6485	10	
	6260	20		6370	9		6487	<5	
	6262	13		6372	<5		6488	<5	
	6271	151		6373	<5		6490	7	
	6275	56		6375	60		6501	23	
	6280	1258		6383	11		6502	45	
	6281	381		6390	54		6503	95	
	6282	60		6391	75		6504	8	
	6284	202		6392	24		6505	9	
	6285	535		6393	<5		6506	<5	
	6286	61		6401	262		6507	9	
	6288	22		6403	7		6509	<5	
	6290	36		6405	9		6510	62	
	6398	7		6407	23		6511	27	
	Wheatbelt	6041		44	6409		5	6513	6
		6042		<5	6410		<5	6516	71
6043		6	6411	<5	6521	5			
6044		17	6412	<5	6560	41			
6302		82	6413	<5	6562	64			
6304		30	6414	6	6564	15			
6306		53	6415	107	6566	127			
6308		69	6418	25	6567	<5			
6309		8	6420	<5	6568	12			
6311		12	6421	<5	6569	13			
6312		205	6423	9	6571	7			
6313		9	6425	<5	6572	<5			
6315		62	6426	30	6574	<5			
6350		19	6428	<5	6575	<5			
6351		<5	6460	27	6603	11			
6352		18	6461	7	6605	<5			
6353		25	6466	<5	6606	6			
6355		5	6467	<5	6609	21			
6356		<5	6468	<5	6612	6			
6357		6	6470	<5					
6359	<5	6472	<5						

#### Notes

Data sourced from Western Australia Department of Health dataset

Exact number of cases less than 5 not reported for confidentiality

Notification date refers to data collected up to the end of the 24-hour reporting period 8pm to 8pm

Cases include all cases whose source of infection is classified as 'locally-acquired', 'interstate-acquired', 'overseas-acquired' and 'source under investigation'

Case data is based on the residential postcode of each case. The case may have an isolation address based in another regional postcode.

Case data includes those determined by both polymerase chain reaction (PCR) tests and rapid antigen tests (RAT)

\*Western Australia Country Health Service (WACHS) includes Goldfields, Great Southern, Kimberley, Midwest, Pilbara, South West and Wheatbelt public health regions

**This document can be made available in alternative formats on request for a person with disability.**

© Department of Health 2022

Copyright to this material is vested in the State of Western Australia unless otherwise indicated. Apart from any fair dealing for the purposes of private study, research, criticism or review, as permitted under the provisions of the *Copyright Act 1968*, no part may be reproduced or re-used for any purposes whatsoever without written permission of the State of Western Australia.

[health.wa.gov.au](https://health.wa.gov.au)